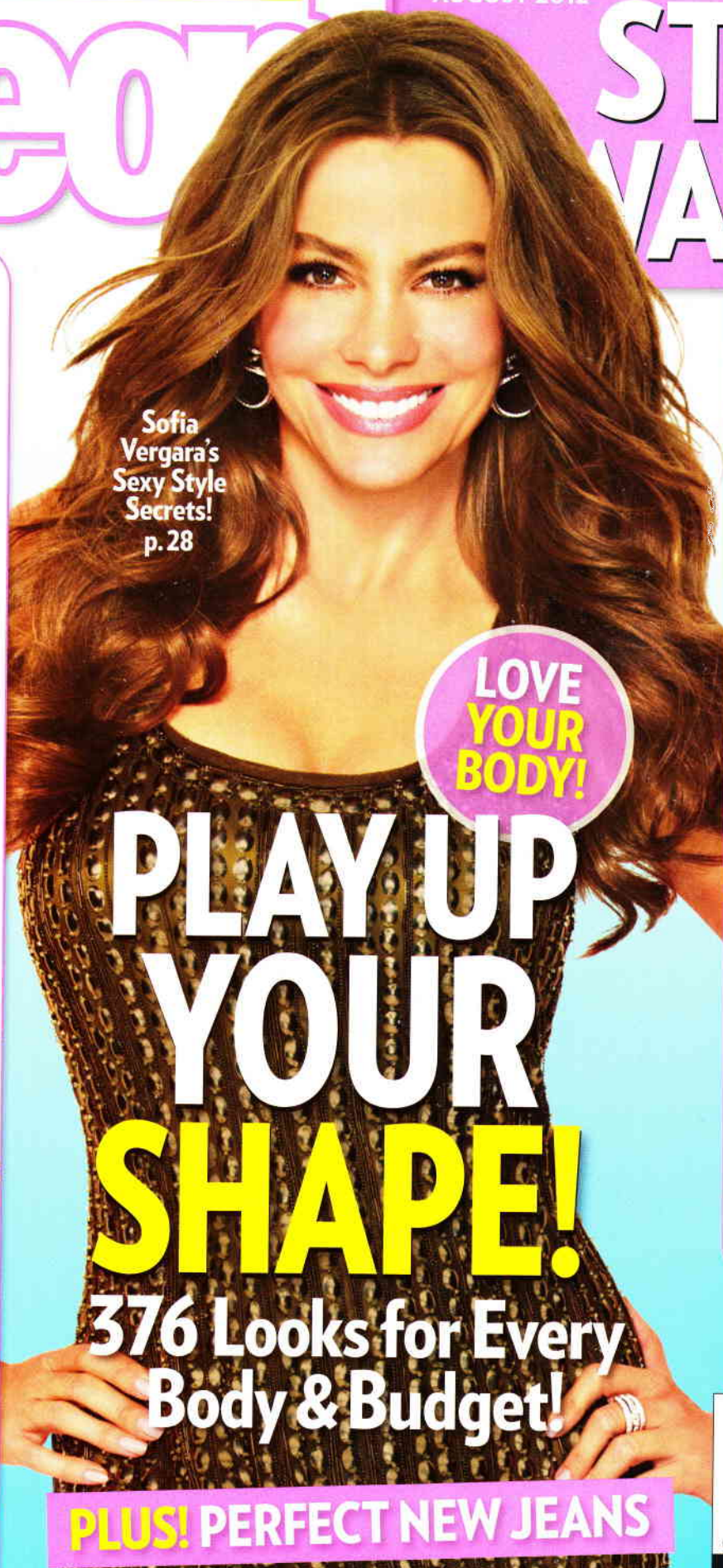


Save \$\$\$! Exclusive Discounts

AUGUST 2012

# Real Style WATCH



Sofia Vergara's Sexy Style Secrets! p. 28

**GREAT FINDS UNDER \$99!**

Shoes!



Dresses!



Jewelry!



Bags!

LOVE YOUR BODY!

# PLAY UP YOUR SHAPE!

## 376 Looks for Every Body & Budget!

**PLUS! PERFECT NEW JEANS**

### BEST BEAUTY BUYS EVER!

All Under \$25!



Spend Less, Look Amazing!



\$3.99US \$4.99CAN 0 8 >

0 92567 10226 6

DISPLAY UNTIL August 17, 2012



# What Works at **WORK!**

Which patterns are appropriate to wear to the office? Insiders from conservative and creative industries share their advice

**Four experts weigh in...**

## THE TV CORRESPONDENT SAYS...



**Alina Cho, CNN national correspondent and host of Fashion: Backstage Pass**

“Especially in creative environments, the workplace fashion rules have loosened: **You can mix two totally different prints together**, like a fitted floral dress with a thin leopard-print belt. Animal prints can be a great accent for your accessories, whether on your scarf, belt or shoes. Just keep jewelry to a minimum and stick to a simple color combination that doesn't compete or clash with the print.”

**Her Take: Try Mixing Patterns**

## THE BUSINESS WRITER SAYS...



**Natalie MacNeil, author of She Takes on the World**

“Wearing prints to more conservative offices is easier than you may think. **Geometric patterns can work if you stick with one item, like a blouse.** Two-tone prints in traditional workwear colors like black, ivory or gray ease you into the trend without taking away from the professional feel.”

**Her Take: Wear a Printed Top**



**Katie Cassidy**

## THE BLOGGER SAYS...



**Kat Griffin, founder of work-style blog Corporette.com**

“Small, subtle prints look great on a little scarf or a simple skirt. **All-over prints of any scale are generally tricky**—you want to avoid busy designs covering most of your body. Also be careful with trendy styles like novelty prints, global patterns and colorful florals. In corporate fields, you risk giving off a vacation vibe.”

**Her Take: Stick to a Single Piece**



**Padma Lakshmi**

## THE FASHION EXPERT SAYS...



**Darcy Penick, divisional merchandise manager of Shopbop.com**

“In just about any workplace, **a black-and-white print blazer is an easy way to incorporate patterns** into your outfit. In a more fashion-forward office, a metallic brocade jacket or slim pants look trend-driven and eye-catching, yet polished. Pair with a white button-down, streamlined jewelry and simple booties or heels. Whenever there's a loud item in your outfit, it's best for everything else to have a quieter effect.”

**Her Take: Go Classic—or Bold**